

## CONDUCTIVITY ANALYZER/TRANSMITTER (4 Wire Type)

Model: WDM-136A

### FEATURES

- Conductivity analyser/transmitter with digital display
- Cell constant adjustment function providing simple adjustment after sensor replacement. This function can also be used for determining transmitter quality.
- Sturdy cast aluminium alloy casing of rainproof construction.
- Suitable for field installation by using a 50A pipe mounting bracket (which can be affixed to the right or left side of the instrument).

### STANDARD SPECIFICATIONS

**Product Name** : Conductivity analyser/transmitter  
**Model** : WDM-136A  
**Measurement Object** : Ultra pure water ~ General water  
**Measurement Range**

Cell constant	0.01 cm <sup>-1</sup>	0.1 cm <sup>-1</sup>	1.0 cm <sup>-1</sup>	10 cm <sup>-1</sup>
Meas. range	0.200	2.00	20.0	0.200
	0.500	5.00	50.0	0.500
	1.000	10.00	100.0	1.000
	2.000	20.00	200.0	2.000
	3.00	30.0	300	3.00
	4.00	40.0	400	4.00
	5.00	50.0	500	5.00
	10.00	100.0	1000	10.00
	15.00	150.0	1500	15.00
20.00	200.0	2000	20.00	
Unit	µS/cm	µS/cm	µS/cm	mS/cm

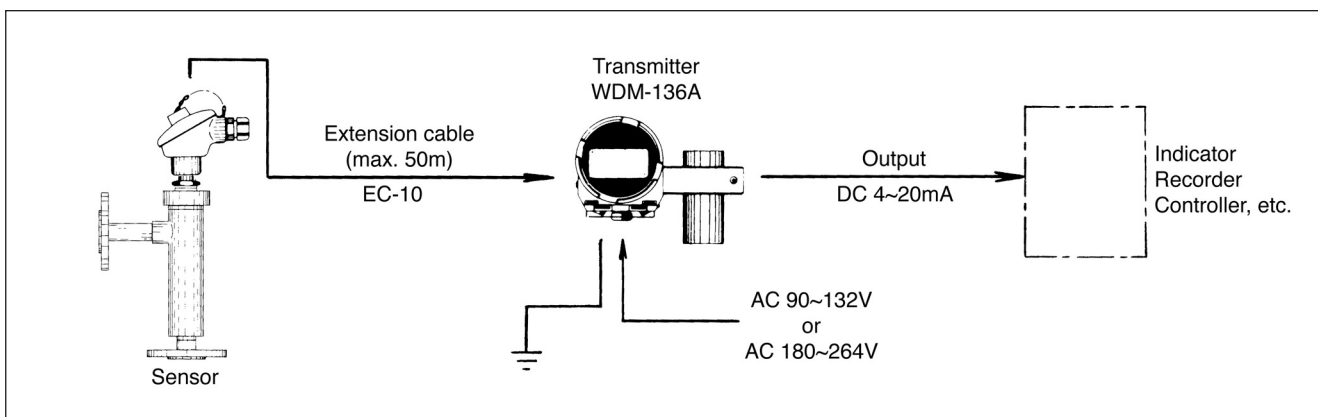
\*Measured value is standardized at 25°C.  
 \*S/m unit is available.

**Indication** : Digital LCD display  
**Characteristics (exclusive of sensor)**  
 Linearity : Within ±0.5%FS, 1 digit (equiv. load)  
**Temperature Compensation**  
 Temperature range : -5~120°C  
 Temp characteristics : Conductivity versus temperature characteristics of NaCl solution.  
 Accuracy : Within ±1.0%FS, 1 digit (sensor excluded)



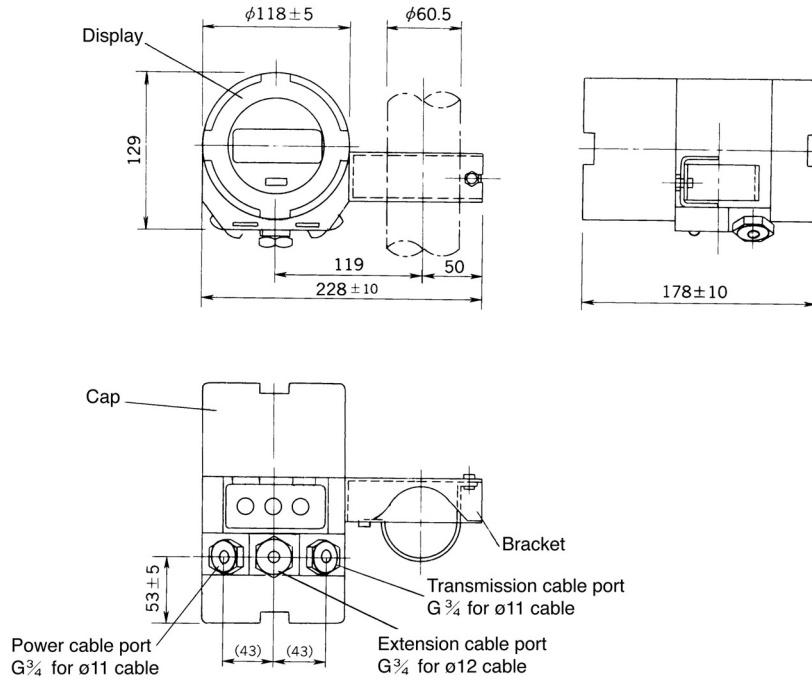
**Ambient Conditions**  
 Temperature : -20~55°C  
 Humidity : 99%RH or less  
**Output** : Isolated from input, 4~20mV DC (max. load 650Ω)  
**Power Requirements** : 90~132V AC, 50/60Hz  
**Power Consumption** : Approx. 3VA  
**Construction** : Field installation (IP55)  
**Mounting** : 50A pole mount  
**Material**  
 Main body : Aluminium alloy casting  
 Window : Glass  
**Paint Colour** : Metallic silver and blue  
**Related Equipment**  
 Extension cable : EC10 (max. 50m)  
 Sensor : Type A, WS etc.  
 Temp. comp. element : 5kΩ/25°C thermister or 1kΩ/0°C white gold resistance  
**Weight** : Approx. 3kg.

### SYSTEM CONFIGURATION

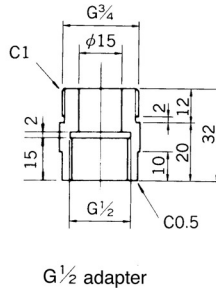
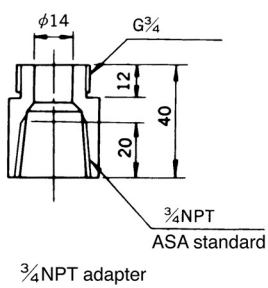


**DIMENSIONS**

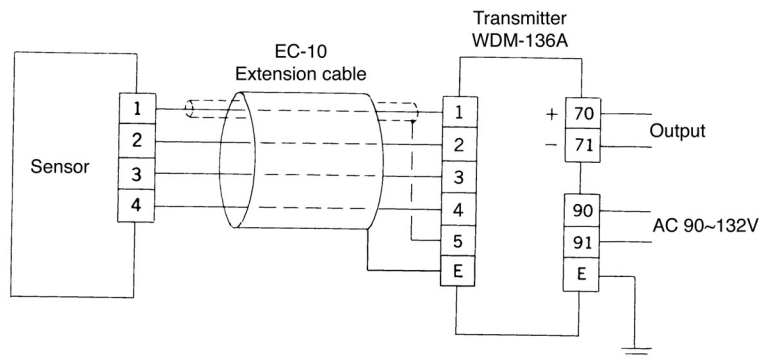
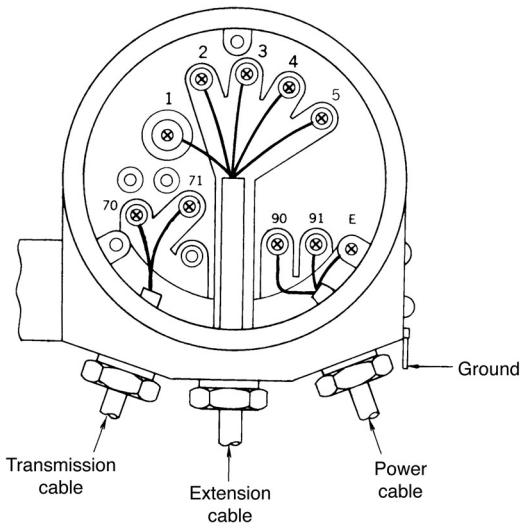
Unit: mm



• Connection to conduit (optional)



**TERMINAL CONNECTIONS**



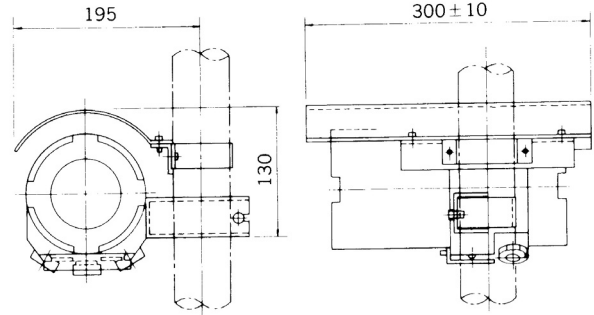
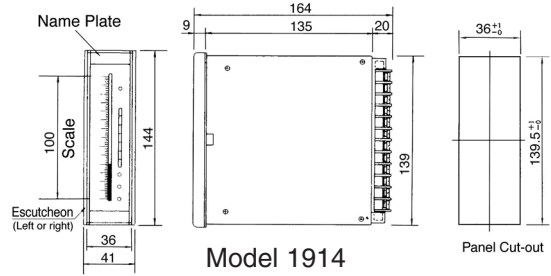


**BARGRAPH METER RELAY**

- Model** : 1914
- Output Signal** : 4~20mA DC
- Alarm Outputs** : High-high, high, low, low-low.  
(Contact rating: 125V, 0.5A)
- Scale** : Specify with purchase order.
- Scale Length** : 100mm
- Display** : Red LED, 101 dots.
- Power Requirements** : 85~264V AC, 50/60Hz
- Power Consumption** : Approx. 7VA
- Ambient Conditions** : 0~45°C, 40~80% RH
- Weight** : Approx 420g

**SUN-SHADE**

- (For protection from direct sun-light)
- Material** : 304 Stainless Steel
  - Mounting** : 50A Pipe bracket
  - Code Number** : 544493K



**DKK-TOA CORPORATION**



**CAUTION**

Do not operate products before consulting instruction manual.

International Operations:  
 DKK-TOA Corporation  
 29-10, 1-Chome, Takadanobaba, Shinjuku-ku, Tokyo 169-8648 Japan  
 Tel: +81-3-3202-0225 Fax: +81-3-3202-5685

Representative Office (Europe):  
 DKK-TOA European Representative  
 St. Johns Innovation Centre, Cowley Rd., Cambridge CB4 0WS UK.  
 Tel : +44 (0)1223-526471 Fax : +44 (0)1223-709239