



Front Door



Rear Door



Side Panel

LINK RACK

Is premium innovation design, an Elegant appearance, delivered with best enterprise service, support and reliability. LINK RACK offered high strength product, high durability and efficiency at work

GS-Series

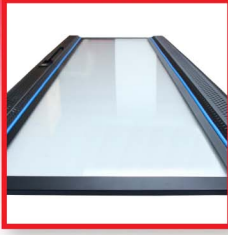
- Provide "See-through" Tempered Glass at front door and round perforated on both side for better ventilation.
- I-frame for supporting the solid steel at rear door.
- Provide swing handle lock at front and rear door.
- I-frame for supporting the solid steel at side panels and easy to remove by slide lock and security lock for install and maintenance.
- Vented raised roof cover can be mounted the fan sets.
- Mounting pole with 10 x 10 mm. mounting hole adjustable in/out with U-height screened on pole.
- Up and down movable stand with Nylon six - castor turn 360 degree.
- Cable entry from the roof and the base with slide.
- All parts are modular knock down with grounding.

Standards :

- Comply with ANSI/EIA-310D, IEC297-1, IEC297-2, BS5954 Part : 2, DIN 41494

| U Height (U=44.45 mm.) | Width (mm.) | Depth (mm.) | Order Number |
|---------------------------|----------------|----------------|--------------|
| 15U | 600 | 600 | CH-60615GS |
| | 600 | 800 | CH-60815GS |
| 27U | 600 | 600 | CH-60627GS |
| | 600 | 800 | CH-60827GS |
| | 600 | 900 | CH-60927GS |
| | 600 | 600 | CH-60642GS |
| 42U | 600 | 800 | CH-60842GS |
| | 600 | 900 | CH-60942GS |
| | 600 | 1000 | CH-61042GS |
| | 600 | 1100 | CH-61142GS |
| | 800 | 800 | CH-80842GS |
| | 800 | 1000 | CH-81042GS |
| | 800 | 1100 | CH-81142GS |

LINK RACK FEATURES



Tempered Glass Door
Tempered Glass
Perforated Steel



Wave Door
Hexa Perforated
for 110% Ventilation



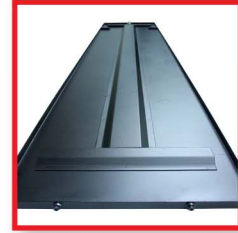
Curve Wave Door
Hexa perforated
for 120% Ventilation



Steel Door
Solid Steel without
Hole for Protection



Side Panel
Easy to Remove by Slide Lock
and Security Lock



Side Panel Support
I-Frame for Supping
The Solid Steel



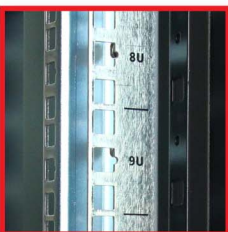
Security Locks
Press and Swing
Handel Lock



Top Cover
Has the Clip
for Cable Entry.



Bottom Panel
Has Slide Shutter
and the Clip for
Cable Entry.



Mounting Pole
U-Height Screened on Pole



Castor & Stand
Up and Down Movable Stand and
Nylon Six - Castor Turn 360 Degree



Grounding
Connecting Between
all Removable Part of Rack

Material :

- Frame - 2.0 mm galvanized steel
- Front Door - 1.2 mm galvanized steel
- 5 mm Tempered glass
- Rear Door - 1.2 mm galvanized steel
- Side Panel - 1.2 mm galvanized steel
- Mounting Pole - 2.0 mm galvanized steel with Zinc Coated

Surface Finishing :

Electro Static powder coated, black (RAL9004)

Maximum Load Capacity :

Static loading : 1000 kgs.

Scope of Delivery :

Cabinets are packed in cartons.